

**EVERY  
DOSE  
COUNTS**



  
**SEMEX<sup>®</sup>**

# Semex Genetic Value Summary

HOLSTEIN		PRODUCTION TRAITS						CONFORMATION TRAITS			AUX			
Semen Code	Name	TPI	Milk	Fat	%F	Prot	%P	PTAT	UDC	FLC	CE	Units	Your Price Per Unit	Total Per Bull
0200HO01677	REGANCREST DOLMAN-ET	1379	566	9	-0.04	19	0.01	1.47	0.71	1.44	10	3	3.00	9.00
<b>Team Average:</b>		<b>1379</b>	<b>566</b>	<b>9</b>	<b>-0.04</b>	<b>19</b>	<b>0.01</b>	<b>1.47</b>	<b>0.71</b>	<b>1.44</b>	<b>10</b>			
<b>Your Package Total:</b>												<b>3</b>	<b>3.00</b>	<b>9.00</b>

0200HO01677 TL TV

REGANCREST  
DOLMAN-ET  
BW MARSHALL X  
EMORY

Kayit: HOUSAM60540099

Dogum Tarihi: July 16, 2001 aAa: 165243 DMS: 345,234

**Designer  
Series**

MACE-G / 12-10

**GMACE TPI: 1379**

PRODUCTION

**21459 Kizlari 8259 Sürü 99%  
Güv..**Süt: **566** NM\$: **-65**Yag: **9** Yag(%): **-0.04** CM\$: **-47**Protein: **19** Protein(%): **0.01** FM\$: **-85**

HEALTH &amp; CALVING

Dogum Kolayligi:	<b>10%</b>	98% Güv..
Kizlarinin Dogum Kolayligi:	<b>8%</b>	90% Güv..
Olü Dogum Orani:	<b>7.2%</b>	94% Güv..
Kizlarinin olü dogum orani:	<b>8.0%</b>	89% Güv..
SCS:	<b>2.82</b>	99% Güv..
Üretim Hayati:	<b>-3.9</b>	92% Güv..
Kizlarinin gebe kalma orani:	<b>-0.9</b>	98% Güv..

TYPE

**14212 Kizlari 5822 Sürü 99% Güv..**  
PTAT: 1.47 UDC: 0.71 FLC: 1.44

MACE-G / 12-10

Boy	Kisa	Uzun	STA
Boy			<b>+3.38</b>
Vücut Yapisi	Zayif	Güçlü	<b>+0.96</b>
Göğüs Derinligi	Sig	Derin	<b>+1.80</b>
Sütçülük Formu	Siki Kaburga	Açık Kaburga	<b>+1.30</b>
Sagri Egimi	Yüksek	Arkaya Egimli	<b>+1.54</b>
Sagri Genisligi	Dar	Genis	<b>+2.15</b>
Arka Bacak (yandan)	Dik	Egik	<b>-0.65</b>
Arka Bacak (arkadan)	Içeri	Düz	<b>-0.78</b>
Ayak Açisi	Düşük	Adim	<b>+3.08</b>
Ayak Bacak Skoru	Düşük	Yüksek	<b>+1.59</b>
Ön Meme Baglantisi	Gevsek	Güçlü	<b>+0.11</b>
Arka Meme Yüksekligi	Düşük	Yüksek	<b>+2.43</b>
Arka Meme Genisligi	Dar	Genis	<b>+1.27</b>
Meme Merkez Bagi	Zayif	Güçlü	<b>+2.23</b>
Meme Derinligi	Derin	Sig	<b>-0.22</b>
Ön Meme Yerlesimi	Genis	Içe Egimli	<b>+0.67</b>
Arka Memebasi	Genis	Içe Egimli	<b>+0.88</b>
Yerlesimi			
Ön Meme Basi Uzunlugu	Kisa	Uzun	<b>+1.77</b>

Alpina Dolman Swannie  
2009Stantons Dolman S Quire  
2010

2010

DOLMAN (0200HO01677)



[Vintage Dolman Millie](#) - 2010



- 2010



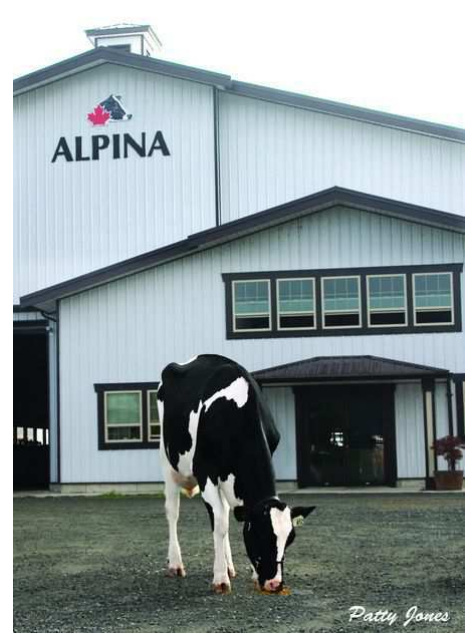
[Stantons Dolman S Quire](#) - 2010



[Vintage Dolman Milly](#) - 2009



[Ulmar Dolman Rosalie](#) - 2009



[Alpina Dolman Swannie](#) - 2009



[Alpina Dolman Swannie](#) - 2009



[Jolicap Carolane Dolman](#) - 2009



[Jolicap Carolane Dolman](#) - 2009



**REGANCREST DOLMAN-ET**

HOUSAM60540099 \*BLF\*CVF ET GT B:2001 Jul 16  
GP-83-5YR-CAN ST'06  
F&L:79 DS:88 R:90  
CAN-GEBV Jan\*10 99%Rel GLPI+952/82%  
KG M+1128/81% F+27/66% %F-0.12  
SCS 2.78 P+35/83% %P-0.02  
CAN-GEBV Jan\*10 98%Rel Conf+8/93%  
MS+4 F&L+4 DS+8 R+8  
Progeny Data: 2647 Daus: 65% GP+  
0EX 83VG 1629GP 897G 38F  
3217 DAUS ME AVG: 11575 427 3.7 361 3.1  
AVG BCA: M219 F219 P218

Prepared for:  
THE SEMEX ALLIANCE  
GUELPH ON  
Tel: 519-821-5060

**MARA-THON BW MARSHALL-ET**

HOUSAM2290977 \*BLF\*CVF ET GT  
VG-86-5YR-USA GM'04  
GMACE Jan\*10 98%Rel GMLPI+1613/97%  
KG M+2013/98% F+41/84% %F-0.32  
SCS 2.81 P+52/96% %P-0.12  
GMACE Jan\*10 98%Rel Conf+9/95%  
MS+7 F&L+8 DS+6 R+0  
Progeny Data: 39 Daus: 82% GP+  
1EX 13VG 18GP 6G 1F

**MAIZEFIELD BELLWOOD-ET**

HOUSAM2103297 \*BLF\*CVF ET GT  
EX-96-10YR-USA GM SP'98  
CAN-GEBV Jan\*10 99%Rel GLPI+362/47%  
KG M+1300 F+37 %F-0.09 P+36 %P-0.06  
CAN-GEBV Jan\*10 98%Rel Conf-7

**MORGAN-VALLEY ELTON MARA**

HOUSAF14840387 \*BLC  
VG-87-5YR-USA GMD DOM  
06-05 305 12224 479 3.9 380 3.1  
3 LACT: 31511 1199 3.8 989 3.1 KG

**ARLINDA MELWOOD-ET**

HOUSAM1879149 \*BLF\*DPF ET GT  
VG-87-USA GM'94 SP'96  
**BREN-WAY BELL BETSY**  
HOUSAF12052401 \*BLF  
VG-88-9YR-USA GMD DOM

**EMPRISE BELL ELTON**

HOUSAM1912270 \*BLC\*CVC\*DPF GT  
EX-95-11YR-USA SP'98

**MORGAN-VALLEY MARCIS MARY**

HOUSAF12936456  
GP-83-4YR-USA

**REGANCREST EMORY DORISSA-ET**

HOUSAF15967188 ET GT B:1995 Nov 08  
VG-86-7YR-USA DOM GMD  
MACE Jan\*10 76%Rel MLPI+121/40%  
KG M-152/31% F-16/15% %F-0.10  
SCS 2.84 P+8/53% %P+0.13  
MACE Jan\*10 82%Rel Conf+3/49%  
MS+3 F&L+3 DS+2 R+7  
02-04 305 11549 456 3.9 401 3.5  
06-05 305 15191 593 3.9 513 3.4  
365 18548 701 3.8 635 3.4  
08-05 305 14483 542 3.7 473 3.3  
3 LACT: 71682 2780 3.9 2545 3.6 KG

**MJR BLACKSTAR EMORY-ET**

HOUSAM2114601 \*BLF\*CVF ET GT  
EX-97-10YR-USA GM  
GMACE Jan\*10 97%Rel GMLPI+21/25%  
KG M+734 F-28 %F-0.56 P+4 %P-0.19  
GMACE Jan\*10 95%Rel Conf+4

**SNOW-N DENISES DELLIA**

HOUSAF12895802 \*BLF\*CVF GT  
EX-95-2E-USA GMD DOM 5\*(0/25)  
02-01 305 9330 339 3.6 313 3.4  
04-00 305 12224 443 3.6 391 3.2  
06-00 305 13685 558 4.1 427 3.1  
07-06 305 14166 572 4.0 438 3.1  
365 16153 649 4.0 500 3.1  
4 LACT: 81757 3224 3.9 2751 3.4 KG  
Progeny Data: 0EX 0VG 0GP 1G 0F  
1 DAUS ME AVG: 9968 389 3.9 372 3.7  
AVG BCA: M188 F199 P225

**TO-MAR BLACKSTAR-ET**

HOUSAM1929410 \*BLF\*CVF\*DPF ET GT  
EX-93-7YR-USA GM'94

**MJR ROTATE ELSIE**

HOUSAF12600262  
VG-88-4YR-USA DOM

**WALKWAY CHIEF MARK**

HOUSAM1773417 \*BLF\*DPF GT  
VG-87-USA GM'91 SP'96

**SNOW-N DORYS DENISE**

HOUSAF11768236  
EX-90-2E-USA GMD DOM  
05-09 305 13145 494 3.8 407 3.1  
365 15127 570 3.8 471 3.1  
4 LACT: 51715 1884 3.6 1656 3.2 KG